



Chapter 6

Recommended Plant Material

P-1. Water Efficient Landscaping

The use of California native and/or drought tolerant plant material is encouraged for tree, shrub and ground cover plantings particularly where there is a transition from formal gardens to natural areas and is required by the City of Vallejo for neighborhood entries, production slopes, common areas and front yards which are installed by the **homeowner/homebuilder**. Through the use of native and drought tolerant plants, a water-efficient landscape will be achieved which will require less irrigation or fertilization than ornamental plants and reinforce the naturalistic character of the site. The following guidelines will assist the **homeowner/homebuilder** in preparing plans for a water-efficient landscape.

A. Selection of Plant Material

As stated, the goal of the Hiddenbrooke landscape and Design guidelines is to retain a natural environment consistent with the topography found in Northern California. Plants should be selected from the following lists of recommended plant materials which has been created to best represent and complement the character of Hiddenbrooke and the surrounding areas. Plants that are associated with other climates such as palms are prohibited, and cacti are discouraged.

B. Lawn

The landscape design should take into consideration that lawn is extremely water intensive and should be limited (in priority order) to the following uses:

1. Active lawn areas such as play areas and game courts.
2. Low use lawn areas such as passive sitting areas adjacent to hardscape areas that are preferably small in size.

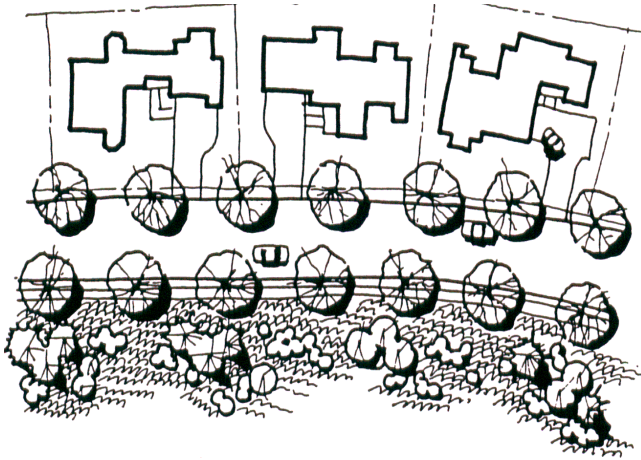
3. Visual use only lawn which is aesthetic only and is not encouraged except in small quantities in the front or back yard. For example, the use of lawn to visually connect two higher use lawn areas in the interest of design continuity and parkway strips between the curb and sidewalk would be acceptable use.
4. Artificial turf is allowed in Hiddenbrooke subject to guidelines in Chapter 5, L-33.

C. General Design Parameters

General design parameters to facilitate drought tolerant landscapes include the following:

1. Trees should be planted to shade ground cover and shrub planting areas to reduce water loss from evaporation.
2. Consideration of tree characteristics should determine if trees would be suitable to be planted within lawn areas.
3. Turf areas should not be less than ten (10) feet in any dimension with the exception of parkway strips between the curb and sidewalk. This allows for the greatest irrigation efficiency. Spray irrigation heads typically do not perform well in narrow areas.
4. Plants should be grouped according to their use of water. Plants requiring similar use of water should be designated and irrigated together. Shrub drip systems and turf spray systems shall be separated.
5. Mulching of all shrub and tree areas with a 2" layer of bark mulch will also help reduce the use of water.
6. When replacing a "Street" tree, choose a tree that grows between 25 and 50 feet in height to enhance the streetscape with a canopy of trees.

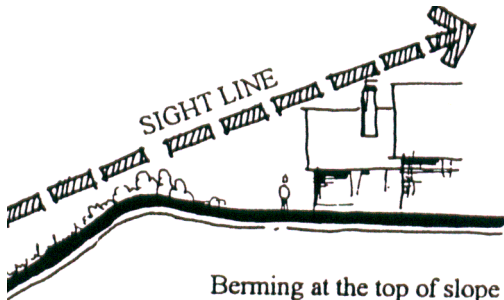
D. Conceptual Production Slope Planting



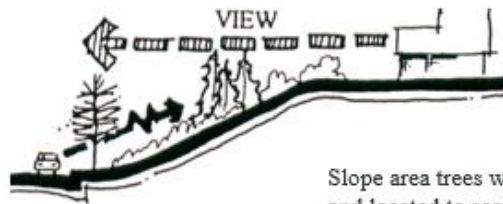
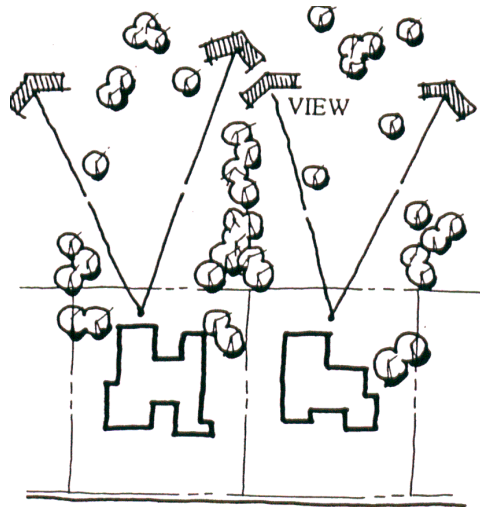
Tree plantings at the top of a slope should be located to maintain views from rear yards. Down slope plantings create more privacy and provide a more natural setting.



Plantings will respond to and take advantage of drainage patterns created on the sculpted slopes. Richer plantings will occur in swale areas recreating the natural condition.

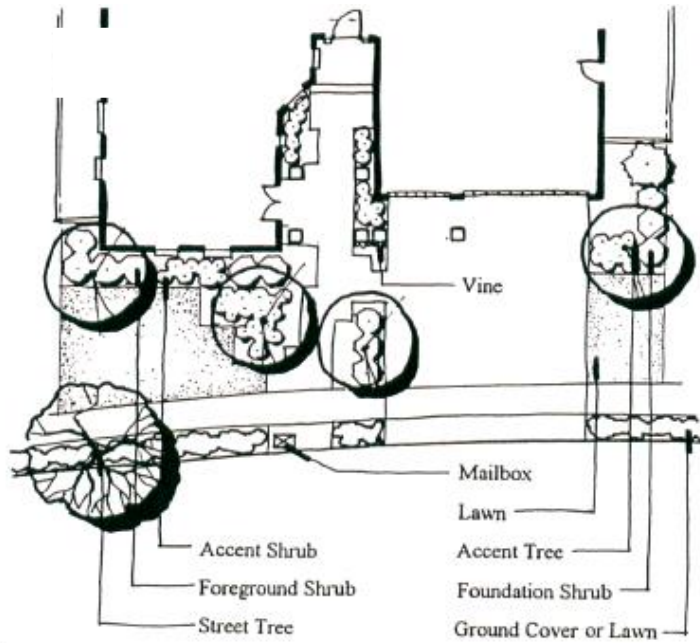


Berming at the top of slope in view of sensitive areas.

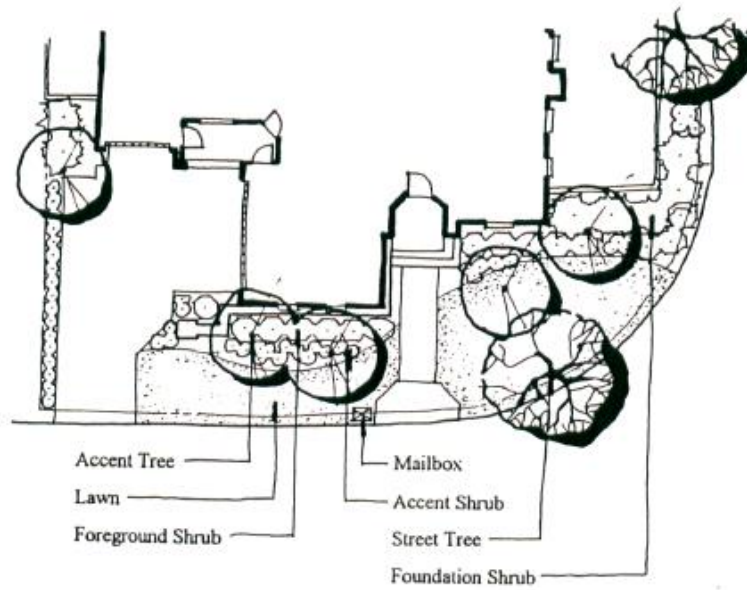


Slope area trees will be selected and located to screen views from below while maintaining views from homes above.

E. Conceptual Front Yard Planting



Standard Lot



Corner Lot

P-2 Neighborhood Entries

Accent Trees

Olea europaea
Pistachia chinensis

Common Name

Olive
Chinese Pistache

Shrubs

Cistus hybridus
Cistus purpureus
Escallonia fradesii
Prunus caroliniana 'Compacta'
Rhamnus californica 'Eve Case'
Rhamnus californica 'Seaview Improved'

Crimson-Spot Rockrose
Orchid Rockrose
no common name
Carolina Cherry
Coffeeberry
Dwarf Coffeeberry

Perennials

Dietes vegata
Iris douglasiana
Lavandula angustifolia 'Hidcot'
Lavandula stoechas 'Otto Quast'
Salvia clevelandii

Fortnight Lily
Pacific Coast Iris
English Lavender
French Lavender
Sage

Street Trees

Acer macrophyllum
Acer rubrum (multiple varieties)
Quercus coccinea
Quercus rubra
Pistachia chinensis
Ulmus (frontier)

Big Leaf Maple
Red Maple
Scarlet Oak
Red Oak
Chinese Pistache
Frontier Elm

P-3 Production Slopes and Common Areas

Theme Trees

Olea europaea
Populus fremontii
Quercus agrifolia
Schinus molle

Olive
Cottonwood
Coast Live Oak
California Pepper

Trees

Aesculus California	California Buckeye
Cercis occidentalis	Western Redbud
Eucalyptus globulus	Blue Gum Eucalyptus
Quercus lobate	Valley Oak
Umbellularia californica	California Bay

Theme Shrubs

Arbutus unedo compacta	Dwarf Strawberry Tree
Ceanothus 'Blue Jeans'	Wild Lilac
Ceanothus 'Dark Star'	Wild Lilac
Ceanothus 'Julia Phelps'	Wild Lilac
Femontodendron 'San Gabriel'	Flannel Bush
Rosmarinus o. 'Collingwood Ingram'	Rosemary

Shrubs

Arctostaphylos d. 'Howard McMinn'	Manzanita
Heteromeles arbutifolia	Toyon
Leptospermum scoparium 'Red Damask'	New Zealand Tea Tree
Leptospermum scoparium 'Ruby Glow'	New Zealand Tea Tree
Romneya coulteri	Matilija Poppy
Salvia leucantha	Mexican Bush Sage

Ground Covers

Arctostaphylos 'Emerald Carpet'	Manzanita
Ceanothus gloriossus 'Anchor Bay'	Wild Lilac
Rhamnus California 'Seaview Improved'	Dwarf Coffeeberry
Rosmarinus o. 'Huntington Carpet'	Rosemary
Wildflower hydroseed mix	

P-4 Front and Rear Yards

Street trees

Acer macrophyllum	Big Leaf Maple
Acer rubrum	Armstrong Red Maple
Acer rubrum	Red Sunset Maple
Acer rubrum	October Glory
Quercus coccinea	Scarlet Oak
Quercus Rubra	Red Oak
Pistachia chinensis	Chinses Pistache
Ulmus (frontier)	Frontier Elm

Trees

Acer macrophyllum	Bigleaf Maple
Acer rubrum (multiple varieties)	Red Maple
Alnus cordata	Italian Alder
Betula jacquemontii	Jacquemontii Birch
Betula nigra	River Birch
Celtis sinensis	Chinese Hackberry
Ceris occidentalis	Western Redbud
Crataegus phaenopyrum	Washington Thorn
Fraxinus oxycarpa 'Raywood'	Raywood Ash
Lagerstroemia indica	Crape Myrtle
Liriodendron tulipifera	Tulip Tree
Magnolia souandiana	Saucer Magnolia
Olea europaea	Olive
Pistachia chinensis	Chinese Pistache
Prunus lyonina	Catalina Cherry
Quercus agrifolia	Coast Live Oak
Quercus coccinea	Scarlet Oak
Quercus ilex	Holly Oak
Quercus kelloggi	California Black Oak
Quercus lobate	Valley Oak
Quercus rubra	Red Oak
Quercus suber	Cork Oak
Quercus virginiana	Southern Live Oak
Schinus molle	California Pepper
Tilia cordata 'Greenspire'	European Linden
Ulmus (fronter)	Frontier Elm
Umbellularia californica	California Bay

Shrubs

Arbutus unedo 'Compacta'	Dwarf Strawberry Tree
Arcostaphylos d. 'Hookeri'	Manzanita
Arcostaphylos d. 'Howard McMinn'	Manzanita
Buxus j. microphylla 'Green Beauty'	Boxwood
Ceanothus species	Wild Lilac
Chaenomeles 'Pink Lady'	Dwarf Flowering Quince
Chaenomeles 'Standard Red'	Dwarf Flowering Quince
Cistus ladanifer	Crimson Spot Rockrose
Cistus purpureus	Orchid Rockrose
Dietes bicolor	Fortnight Lily
Echium fastuosum	Pride of Madeira
Fremontodendron 'San Gabriel'	Southern Flannel Bush
Galvezia speciosa	Island Bush Snapdragon
Heteromeles arbutifolia	Toyon
Leptospermum s. 'Red Damask'	New Zealand Tea Tree
Leptospermum s. 'Ruby Glow'	New Zealand Tea Tree
Mahonia aquifolium	Oregon Grape
Mahonia pinnata	California Holly Grape
Pittosporum tobira	Mock Orange
Prunus caroliniana 'Compacts'	Carolina Cherry
Raphiolepis indica	Indian Hawthorn
Rhamnus californica 'Eve Case'	Coffeeberry
Romney coulteri	Matilija Poppy
Rosa floribunda	Floribunda Rose
Rosmarinus o. 'Collingwood Ingram'	Rosemary
Rosmarinus 'Tuscan Blue'	Rosemary
Salvia leucantha	Mexican Bush Sage
Viburnum tinus	Dwarf Laurustinus

Ground Covers

Arctostaphylos e. 'Danville'	Danville Manzanita
Arctostaphylos 'Emerald Carpet'	Manzanita
Arctostaphylos 'Point Reyes'	Manzanita
Baccharis pilularis 'Pigeon Point'	Dwarf Coyote Brush
Ceanothus gloriolus 'Anchor Bay'	Wild Lilac
Cerastium tomentosum	Snow-in-Summer
Cistus skangergii	Rockrose
Cistus salvifolius	Sageleaf Rockrose
Convolvulus mauritanicus	Ground Morning Glory

Ground Covers - continued

Coprosma pumila 'Verde Vista'	Verde Vista Coprosma
Cotoneaster species	Prostrate Cotoneaster
Gazania species	Gazania
Hypericum calycinum	St. John's Wort
Lonicera japonica 'Halls'	Halls Honeysuckle
Rhamnus californica 'Seaview Improved'	Dwarf Coffeeberry
Ribes viburnifolium	Evergreen Current
Rosmarinus o. 'Huntington Carpet'	Dwarf Rosemary
Vinca minor	Dwarf Periwinkle

Vines

Ficus pumila	Creeping Fig
Hardenbergia violacea	Happy Wanderer
Parthenocissus tricuspidata	Boston Ivy
Wisteria floribunda	Wisteria